

Name Key Hour \_\_\_\_\_

**Algebra Chapter 4  
Part 1 Test Review**

**What is the use and the importance of systems of equations?**

- We can solve equations with 2 variables.
- way to solve more complex real world problems

**Give an advantage and a disadvantage of solving a system of equations by graphing.**

↓  
Good for  
visual learners,  
shows an obvious answer

↳ It is not helpful unless you have  
whole #'s as answers. Fractions and  
decimals are not easy to find.

You should be able to...

- Graph inequalities on a number line.
- Graph compound inequalities

Solve the inequality.

3.  $-1/3 p \geq 7$

3.  $p \leq -21$

4.  $3k - 7 < 14$

4.  $k < 7$

Solve the compound inequality/absolute value.

7.  $2 \leq 3j - 4 < 8$

7.  $2 \leq j < 4$  or  $j \geq 2$  and  $j < 4$

8.  $|c + 8| > 16$

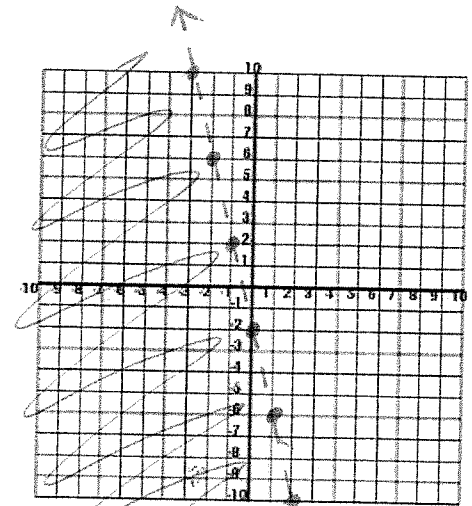
8.  $c < -24$  or  $c > 8$

9.  $|5t - 2| \leq 8$

9.  $-\frac{6}{5} \leq t \leq 2$  or  
 $t \geq -\frac{6}{5}$  and  $t \leq 2$

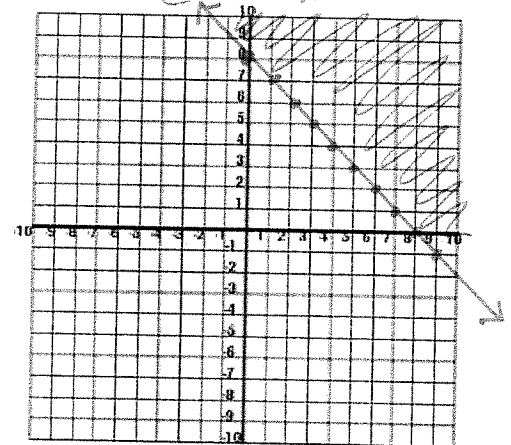
Graph the inequality.

10.  $y < -4x - 2$



11.  $2x + 2y \geq 16$

$y \geq -x + 8$



How many solutions does the system of equations have?

12.  $4x - 6y = 12$

$-2x + 3y = -6$

12.  $\infty$  solutions

13.  $y = \frac{1}{2}x$

$y = x + 5$

13. 1 solution

Solve the system of equations by graphing.

14.  $y = 3x + 2$

$y = -2x + 7$

14. (1, 5)

